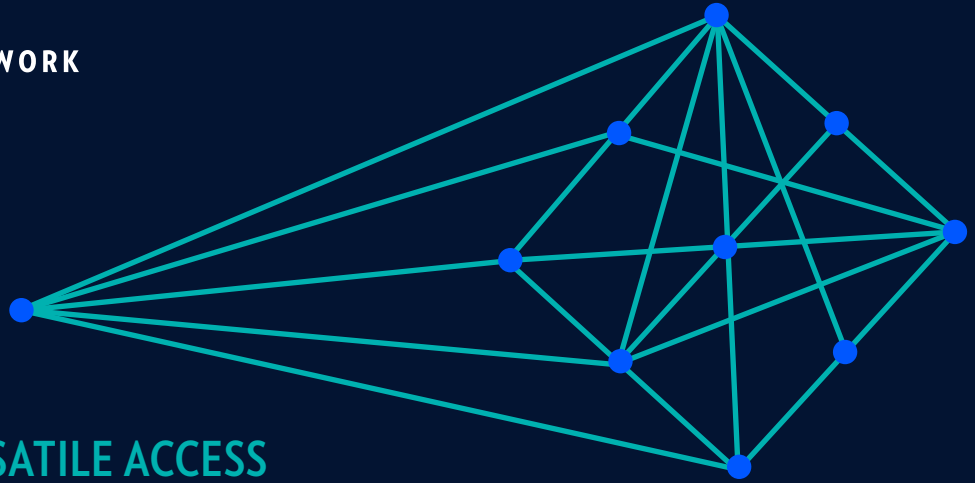
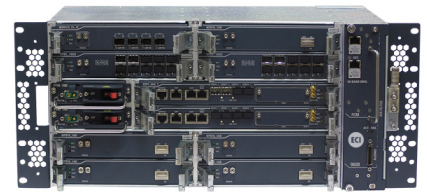


APOLLO OPT9608

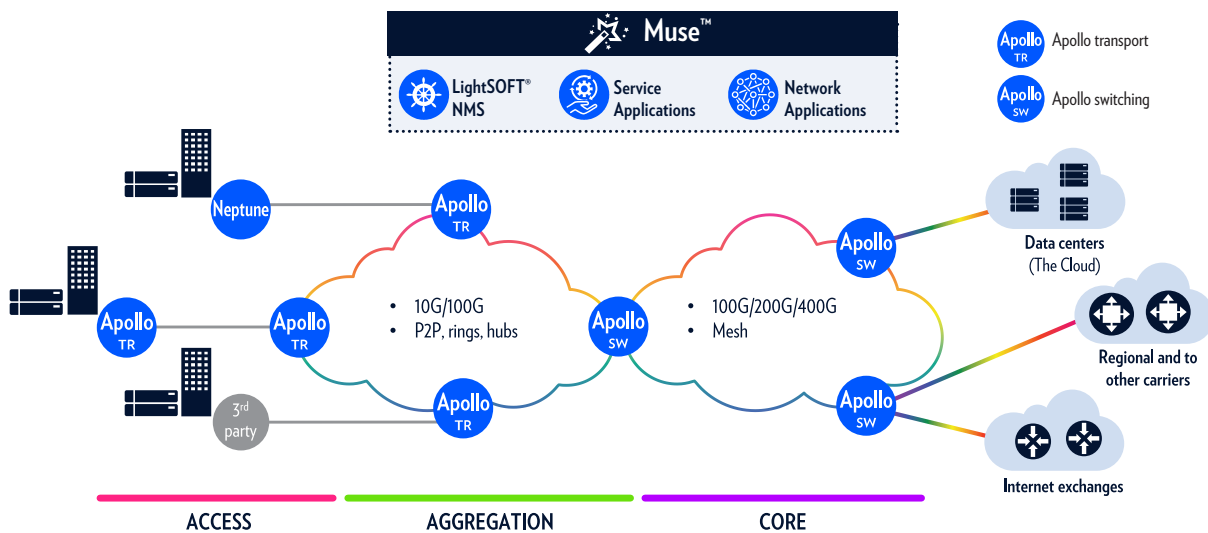
POWERFUL AND VERSATILE ACCESS TO CORE OPTICAL TRANSPORT



The Apollo family of optical transport and switching platforms enables service providers to deploy end-to-end transparent optical networking solutions for a broad range of clients at the lowest cost per bit. Moreover, Apollo does this while simultaneously supporting packet services, high efficiency operations, high availability, low-latency Layer 1 encryption, and SDN applications. OPT9608 is Apollo's powerful and versatile mid-range transport platform with a total client and network capacity of 6.4T. OPT9608's arsenal of transponders and muxponders includes 100G, 200G, and 400G network interfaces that are software programmable for varied client mixes. It supports up to 20 degrees of all-optical networking using flexible grid CDC ROADMs. Along with other members of the Apollo family, OPT9608 can be used to construct and customize any type of access-through-core and data-center-connectivity optical transport application.



<p>Lowest cost per bit transparent transport</p>	<p>Integrated packet services MEF Carrier Ethernet</p>	<p>High-efficiency operation E2E visibility and control</p>	<p>Green technology dense low-power blades</p>
---	---	--	---



Technical specifications

Topologies	Mesh, hub, ring, linear, point-to-point
Spectrum	Extended C-band Fixed grid: 50GHz/96ch and 100GHz/48ch Flexible spectrum at 12.5GHz resolution Super-channel at 12.5Ghz resolution up to 128 channels
Capacity	Shelf: 8 slots for blades, interchangeable across Apollo family transport platforms 4.8T client capacity (9.6T total capacity)
Service (client) interfaces	Ethernet (1GbE, 10GbE, 40GbE, 100GbE) SDH/SONET (STM-1, 4, 16, 64/OC-3, 12, 48, 192) SAN (FC-1, 2, 4, 8, 10, 16) Video (DVB-ASI, SDI 270, HD-SDI 1.5G/3G) OTU (1, 2, 2e, 3, 4)
Layer 2 interfaces	MEF Carrier Ethernet 2.0 virtual LAN services: E-Line, E-LAN, E-Tree, and E-Access Statistical multiplexing transport aggregation Connection-oriented transport using integrated 60G Q-in-Q or MPLS-TP switch
Encryption	AES256-GCM with Diffie-Hellman group 5 key exchange, FIBS 140-2, level 2
Network (DWDM) interfaces	OTU1 (2.5 Gbps) OTUC2 (200 Gbps) OTU2/2e (10 Gbps) OTUC4 (400 Gbps) OTU3e (40 Gbps) OTUC6 (600 Gbps) OTU4 (100 Gbps)
Optical add/drop multiplexers	2-, 4-, 9-, and 20-degree ROADMs (fixed grid and flexible grid) with automatic power equalization and Colorless, Directionless, and Contentionless (CDC) wavelength routing Fixed OADM 100% add/drop capacity
Amplification	EDFA, Raman, Hybrid EDFA/Raman, with embedded optical leveling and control Output power: 16 dBm to 26 dBm Gain: up to 40 dB with/without 10 dB midstage
Protection	OCH 1+1, OLP, OMSP, Y Protection, DRI/DNI
Restoration	Wavelength Switched Optical Network (WSON) – wavelength level Automatic Switched Optical Network (ASON) – service level 1+1, 1+1 forever, preplanned/dynamic protection
HW redundancy	All common units/cards: power supply, controllers, fan units
Dimensions	19" width, 221 mm height, 253 mm depth, 8 service slots
Power input	-40.5 VDC to -75 VDC, 90 VAC to 264 VAC
Environmental	Operating temperature: -5C to +55C Relative humidity: 5% to 90% (non-condensing)
SDN	Muse™ applications (e.g. Bandwidth on Demand, Scheduled Services)
Network management	LightSOFT® end-to-end, point-and-click network management
Performance monitoring	LightPULSE™ integrated real-time OSNR and other parameters

Specifications subject to change without notice

Contact us to find out how Apollo can build powerful and versatile optical networks



ABOUT ECI

ECI is a global provider of ELASTIC network solutions to CSPs, critical industries, and data center operators. With the advent of 5G, IoT, and smart everything, traffic demands are increasing dramatically, and network operators must make smart choices as they evolve their infrastructure. ECI's Elastic Services Platform leverages our programmable packet and optical networking solutions, along with our service-driven software suite and virtualization capabilities, to provide a robust yet flexible solution for any application. ECI solutions are tailored for the needs of today, yet flexible enough to meet the challenges of tomorrow. For more information, visit us at www.ecitele.com